



Important design notes:

- 

**KEY**

Click on product names to access technical information

- Hydrostop WS10 
- EPDM by others 

**Conditions**

This drawing is copyright of Premcrete. Permission for copying may be obtained from Premcrete. This drawing must be read in conjunction with the relevant datasheets, BS 8102:2022 and BS 8485:2015+A1:2019 if appropriate. This drawing has been prepared as a guide to assist with the installation of the products. This drawing requires the approval of the designer of the structure. It is the responsibility of the designer to ensure that any design decisions, made by others that have an impact on the waterproofing design are brought to the attention of the waterproof designer. It is the responsibility of the designer of the structure to ensure that the details shown on this drawing match the construction drawings. Drawing template is A4L.

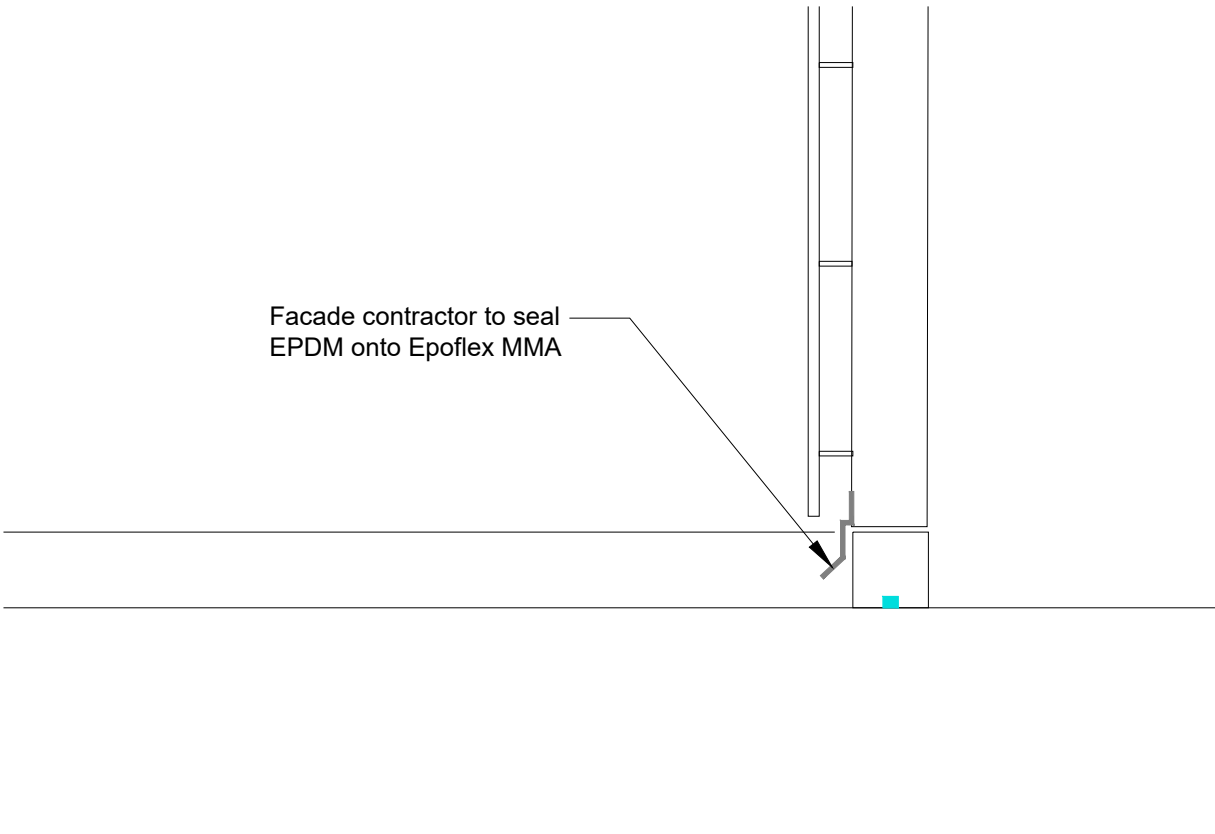
**Important Notes**

The waterproofing design is designed to the Grades of Environment described below:  
 Grade 1A - Seepage and dampness from internal and external sources tolerable  
 Grade 1B - No seepage, however damp areas from internal and external sources tolerable  
 Grade 2 - No seepage through structure is acceptable however condensation and dampness are tolerable as a result of internal air moisture  
 Grade 3 - Ventilation, dehumidification or air conditioning are required appropriate to intended use in accord with BS 8102:2022 Table 2 to achieve a dry, habitable environment which is outside the scope of this design

Construction joints are required to be scabbled or retarded to ensure good concrete connection. An approved curing agent is to be applied to concrete immediately after pouring.  
 Laps between dissimilar waterproofing products to be 100mm unless otherwise annotated.  
 All substructure construction joints must have waterbar installed with a minimum of 75mm concrete cover. (Internal, non-retaining construction joints do not require waterbars).  
 A maximum ratio of 3:1 is required for any liner wall pours. Liner wall pours should be cast 'hit and miss' to ensure that shrinkage of concrete is compensated. It is the responsibility of the installing contractor to ensure that good concrete practice is maintained at all times when pouring concrete.  
 If the design incorporates any of the following products:

- Hydrocrete should be a minimum of 200mm thick or 300mm if poured monolithically in conjunction with standard concrete.
- Hydroprufe Primer to be applied to concrete/ masonry substrate prior to the application of Hydroflow Corner Tape or Hydroprufe Detail Tape.
- Hydroseal Sealer to be applied to all surfaces prior to installing Hydroflow HP.
- High density insulation under Hydroflow HP20 should be fixed to substrate at a minimum of 5 fixings per sheet.

Facade contractor to seal EPDM onto Epoflex MMA



Rev	Date	Description	Dwn	Chk
PD1	11/07/24	Issued for Information	JM	KW

Client  
TENDER

Project  
GENERIC

FIS Drawing No  
TD-50 (3)

Date  
11/07/2024

Scale  
Not to Scale



44 Macadam Way | West Portway Industrial Park  
 Andover | Hampshire | SP10 3XW  
 Tel: 02380 276166 | sales@premcrete.com  
 www.premcrete.com

Title  
TYPICAL PODIUM PERIMETER UPSTAND & FACADE DETAIL

This drawing is designed to achieve the following environment in accordance with BS 8102:2022