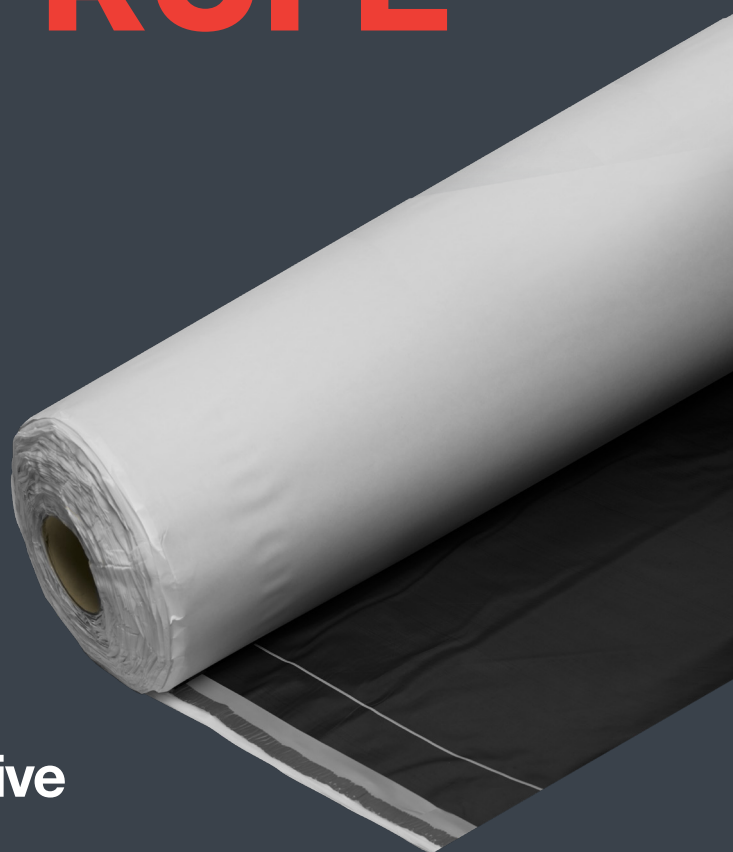


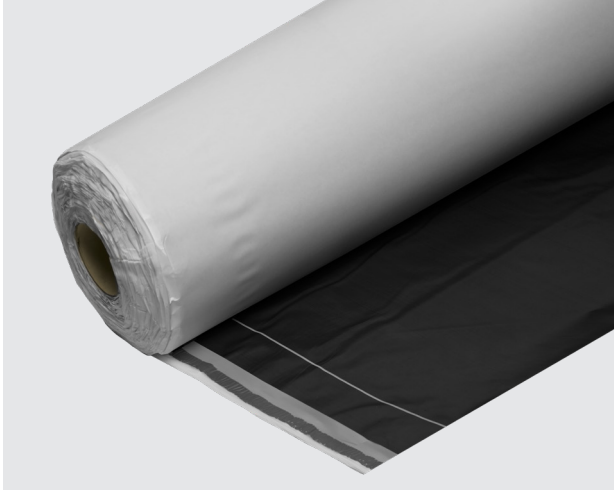


# HYDROPRUFE 8000



Gas resistant self-adhesive  
waterproof membrane





TYPE  
A

POST  
APPLIED



WATER  
RESISTANT



GAS  
RESISTANT



RADON  
RESISTANT

UK  
CA

UK  
CONFORMITY

25  
YEARS

PRODUCT  
WARRANTY

## DESCRIPTION

HYDROPRUFE 8000 is a high performance, cold applied waterproof and gas resistant self-adhesive membrane manufactured from an aluminium/polyethylene laminate, coated on one surface with a layer of polymer modified Bitumen adhesive.

It is suitable for application to masonry, concrete and other substrates to provide an effective barrier to both water and ground gases and is suitable for use in line with BS 8485:2015-A1:2019.

## ADVANTAGES

- Rapid and easy cold application to substrates.
- Aluminum laminate provides superior resistance to ground gas.
- Effective resistance to a 6m head of water when fully supported.
- Excellent adhesion to a wide variety of substrates.

## USES

HYDROPRUFE 8000 is used as a self-adhesive membrane for application to substructures where resistance to both groundwater and ground gases is required.

HYDROPRUFE 8000 provides adequate resistance to methane, carbon dioxide and radon gas. It is often used for detailing at the slab edge up to DPC level but is also suitable for post-applied application to the outside of retaining walls for basements and below ground structures.

## INSTALLATION PROCEDURE

### Surface Preparation:

The substrate to which the membrane is to be applied, should be smooth and free from excessive undulation and sharp projections, which may puncture the membrane.

Concrete substrate should be dry and free from dust and other deleterious materials.

TEKNOCEM HBR, a high-build structure mortar, should be used to form a 50 x 50mm corner fillet at any internal corner junction to eliminate sharp corners and allow ease of membrane application. Allow the mortar fillet to harden before application of the membrane.

### Priming:

Apply HYDROPRUFE PRIMER by roller, brush or spray application at a nominal rate of 6-8m<sup>2</sup> per ltr and allow to completely dry before the application of the membrane commences.

### Application:

The release paper should be removed from the first 500mm of the HYDROPRUFE 8000 membrane before being pressed firmly into position to ensure no air pockets are formed.

Application of the roll is then completed by continuing to remove the release paper and applying pressure to ensure the membrane is well bonded to the substrate.

Adjacent sheets of membrane should lap by a minimum of 50mm, this lap is an addition to any over-lap onto the selvedge. Prior to lapping onto an adjacent sheet, the release strip protecting the selvedge should be removed.

Joints should be firmly rolled to ensure a watertight seal between the two sheets.

The membrane should be immediately protected using PREMCRETE PROTECTION BOARD 600 or HYDROFLOW HM8 to prevent damage during backfill or by following trades.

## ANCILLARY PRODUCTS



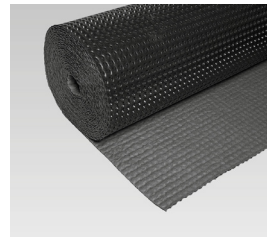
**TEKNOCEM HBR**  
25KG



**HYDROPRUFE PRIMER**  
5ltr or 25ltr



**PROTECTION BOARD**  
2400 x 1200mm



**HYDROFLOW HM8**  
2m x 20m roll

## TECHNICAL & PERFORMANCE PROPERTIES

| Characteristic                                    | Test Method           | Value                                     |
|---|-----------------------|---|
| Water tightness to liquid water                   | EN 1928               | Pass                                      |
| Resistance to Static Load                         | EN 12730              | 20kg                                      |
| Pass Tensile Properties Maximum Tensile Stress CD | EN 12311-2            | ≥ 2N/mm <sup>2</sup>                      |
| Pass Tensile Properties Maximum Tensile Stress MD | EN 12311-2            | ≥ 2N/mm <sup>2</sup>                      |
| Elongation at Break CD                            | EN 12311-2            | ≥ 120%                                    |
| Elongation at Break MD                            | EN 12311-2            | ≥ 120%                                    |
| Durability of Watertightness against ageing       | EN 13967:2012+A1:2017 | Pass                                      |
| Durability of Watertightness against chemicals    | EN 13967:2012+A1:2017 | Pass                                      |
| Resistance to Impact                              | EN 12691 ≥ 500m       |   |
| Resistance to tear (Nail Shank) CD                | EN 12301 -1 ≥ 100N    |   |
| Resistance to tear (Nail Shank) MD                | EN 12310 -1 ≥ 100N    |   |
| Reaction to Fire                                  | EN 13501              | Class F (Euro Class)                      |
| Joint Strength                                    | EN 12317-2            | ≥ 30N                                     |
| Water Vapour Transmission (Density Flow rate)     | EN 1931               | 0.013 g/(day•m <sup>2</sup> )             |
| Water Vapour Transmission (Resistance factor, μ)  | EN 1931               | 2380000g μ                                |
| Thickness   | EN 1849-2             | 1.00mm                                    |
| Mass  | EN 1849-2             | 1100 g/M <sup>2</sup>                     |
| Methane GTR                                       | ISO 15105-1           | <10 ml/m <sup>2</sup> .day                |
| Carbon dioxide GTR                                | ISO 15105-1           | <10 ml/m <sup>2</sup> .day                |
| Radon Diffusion                                   |                       | 5.0 X 10 <sup>-14</sup> m <sup>2</sup> /s |

## PACKAGING & COVERAGE

### HYDROPRUFE 8000

Roll Size: 1m x 20m roll.

Roll Weight : 33kg.

### HYDROPRUFE PRIMER

5ltr and 25ltr.

Coverage: 5-7m<sup>2</sup> per litre.

## HEALTH & SAFETY

See separate material safety datasheet.

## STORAGE & SHELF LIFE

The membrane must be stacked vertically and in dry well-ventilated buildings, away from direct sunlight.

